



## **“BEST OF LUANGWA” 8 night SPECIAL – 2024**

**3 nights Jackalberry Treehouse at Flatdogs Camp & 5 nights Lion Camp**

Day 1 Arrive in Lusaka where you will be met and assisted through to check in for your onward flight to Mfuwe.

Lusaka – Mfuwe

Proflight Zambia

You will be met at Mfuwe airport by one of our safari guides and transferred to camp (+/- 30 minutes)

Day 1-4 **JACKALBERRY TREEHOUSE AT FLATDOGS CAMP – 3 nights**

Flatdogs Camp is situated on the Luangwa River opposite the Mfuwe area of the South Luangwa National Park; an area where the wildlife has been protected for so many years that game almost entirely ignores safari vehicles, so we are lucky to have some incredible sightings of predators, including leopard and wild dog as well as the wide variety of other species found in the South Luangwa.



You will be staying here at Flatdogs in the unique Jackalberry Treehouse, your own private eeyrie looking out onto a floodplain dotted with acacia and sausage trees. The Treehouse has been created from three teak platforms built around three beautiful living Mchenja trees (African Ebony or Jackalberry tree).

The whole of the front of the Treehouse is open, allowing you to sleep “under the stars” and feel part of this thrilling



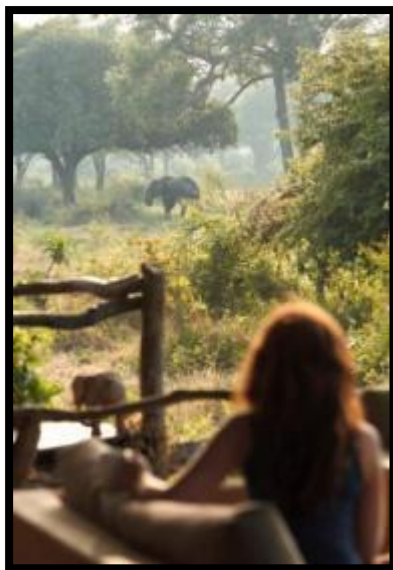
landscape where you may be awoken by a family of elephant taking an early morning mud-bath in front of you, or giraffe pausing for a drink. Set away from the rest of camp, and surrounded by fairly thick indigenous trees and bushes, we need to transfer you to and from the house by vehicle for safety. You will have a hand held radio at the Treehouse so you can call to order your meals or to have a vehicle to come and collect you.

If you arrive on the morning flight, there is time to settle in and have some



lunch before being collected from the Treehouse by your safari guide at around 3.30pm and driven up to the main part of camp to meet the rest of us for tea. You and your guide will head off into the Park as soon as you're ready and start to explore this area of the Park, listening out for alarm calls to follow and

enjoying the animals, birds and differing habitats found in this area. You will stop most likely at a scenic spot on the river or a lagoon to watch the infamous African sunset and for night to fall before continuing on with a spotlight, looking for some of our nocturnal species. Lion, leopard, hyena, fishing owl, civet, porcupine and genet are some of the nocturnal species regularly seen. You will return to camp as the park closes at 8pm, in time for dinner which you can either have up at camp, or on your private dining deck at the Treehouse.



In the mornings, your guide will pick you up at around 0530 and bring you up to the main part of camp where you can take a light breakfast of toast and cereal before heading into the Park to further explore or maybe return to an exciting sighting from the night before to see what has developed. Guides here in the South Luangwa have to take in depth examinations in order to qualify as professional guides and are specialist naturalists, knowledgeable in all aspects of the Park, from the wildlife and birds, to the trees and shrubs on which they feed, animal behaviour & ecology, conservation principles and the history of the Park.

Usually we return to camp just after ten in time for either a big cooked breakfast or a brunch type lunch, whichever you would prefer. Our a la carte restaurant is open all day, so you can choose to eat when you are hungry and

all meals and snacks are included. You can then relax during the heat of the day, sitting in the Treehouse watching what game comes to the waterhole, or head up to camp to sit on the river bank next to the swimming pool, or if you are interested in seeing more of the Mfuwe area, we can happily organize to take you up to the village where you can spend a couple of hours visiting the local markets, the local schools we are supporting, the rural health clinic, the nearby anti-poaching base and some of the local conservation and community projects. The safari package includes your private accommodation in the Treehouse, all meals, shared safari activities, National Park Entry fees, LCCF, laundry and airport and inter-camp transfers. Not included are drinks from the bar or items of a personal nature like shop purchases or internet use.

**Day 4** This morning we will set off at 6am with your luggage packed and ready and drive off north towards your bush camp inside the National Park. We usually do this transfer as a game drive, aiming to reach camp at around 1030 so you can settle in to camp and your room before lunch is served.

**Day 4-9 LION CAMP - 5 nights**

As the most remote lodge inside South Luangwa National Park, Lion Camp opens only during the peak game viewing months of the dry season here in the Luangwa. It is a stylish, unique and independent lodge which is able to



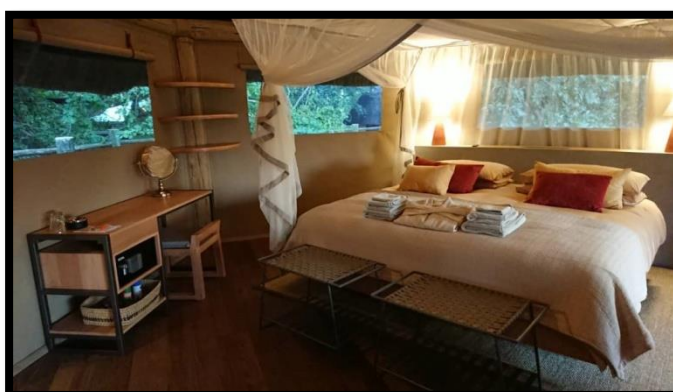
accommodate a maximum of 18 guests. Lion camp sits on one of the oldest bushcamp sites within the National Park, originally sited because it was one of the best game viewing areas in the north of the park.

Located 40km upstream from the main Mfuwe gate, and on the banks of an oxbow lagoon or “wafwa”; the lodge looks

out onto open grassland which is frequented by grazing mammals by day, and becomes a hunting ground for lion by night.

Accommodation at Lion Camp will be in a luxurious canvas and thatch chalet. Built on raised wooden platforms, they are linked to each other and the main area by a raised wooden boardwalk. Your chalet will have either a four poster king-size double bed or twin beds, and a walk-in mosquito net. En-suite with a

shower and toilet, it also has a private deck which overlooks the open plain in front.



In between meals, your time is free until the afternoon safari, so you can swim in the infinity pool, explore the library or fitness centre, or game view from your deck. In the absence of fences, game moves freely through the lodge grounds. Elephant, hippo, bushbuck and other antelope are regularly seen within the confines of the camp and there are healthy populations of lion, leopard, buffalo and giraffe in the immediate area.

Afternoon tea is served at 15h30, you will then head out on an afternoon activity – normally a game drive but it is possible to walk and meet a vehicle for sundowners and then continue on a night drive.

You will return to the lodge around 20h00 and have time to freshen up before a 3 course dinner is served.

The following morning – the program is similar to that at Flatdogs – an early morning wake-up call and a safari activity (your choice of walking safari or game drive) leaving at 06h00 – coming back around 4 hours later depending on the heat of the day.



The safari package at Lion Camp includes your accommodation, all meals, local drinks, shared game-viewing activities, National Park Entry fees, LCCF, laundry and transfers.

Day 9 You will be transferred back through the Park to Mfuwe airport to connect with your flight back to Lusaka.

Mfuwe – Lusaka

Proflight Zambia

End Services Lusaka airport

\*\*\*\*\*

**Total cost per person sharing 21 May-30 June 2024 = US\$5948.50**

**Total cost per person sharing 01-15 July & 01-31 October 2024 = US\$6185.50**

**Total cost per person sharing 16 July-30 September 2024 = US\$6981.50**

Please contact [info@flatdogscamp.com](mailto:info@flatdogscamp.com) for single occupancy rates

This package includes Meet & Assist Lusaka airport, return flights Lusaka-Mfuwe-Lusaka, all accommodation and activities as described, all Park Entry fees, conservation levies and taxes, laundry, all drinks while at Lion Camp, and airport and inter-camp transfers. Not included are Visa fees for Zambia, drinks while at Flatdogs Camp, gratuities or items of a personal nature.